

eTwinning 2015-2016

“bridges connect”

2nd primary school of Grevena Greece

SERBIA
ARMENIA
ITALY
POLAND
GREECE
TURKEY
CYPRUS
S1'-84 Poznan - Poland
REPUBLIC OF MOLDOVA
SLOVAKIA
ETWINNING
POLAND
GREECE
GREECE
PROJECT



Paintings by old bridge

2nd primary school of Grevena Greece

Rio - bridges https://www.youtube.com/watch?v=eB7Cb3FxC_U

The 10 largest bridges in the world

<https://www.youtube.com/watch?v=OYK5sHQgJk>

Videoconferencing four schools with special scientist for modern bridges

https://www.youtube.com/watch?v=1s_gkxm01Ag

Curious bridges in the world

<https://www.youtube.com/watch?v=oaFKmCHwcSI>

Bridges Grevena

<https://www.youtube.com/watch?v=glxbGnMVsQI>

3RD PRIMARY SCHOOL GREVENA, GREECE

Egnatia bridges

<https://www.youtube.com/watch?v=sgMY16DcaTw>























**Primary School 11 Pafou "Ag.Spyridonas", Paphos
Cyprus**

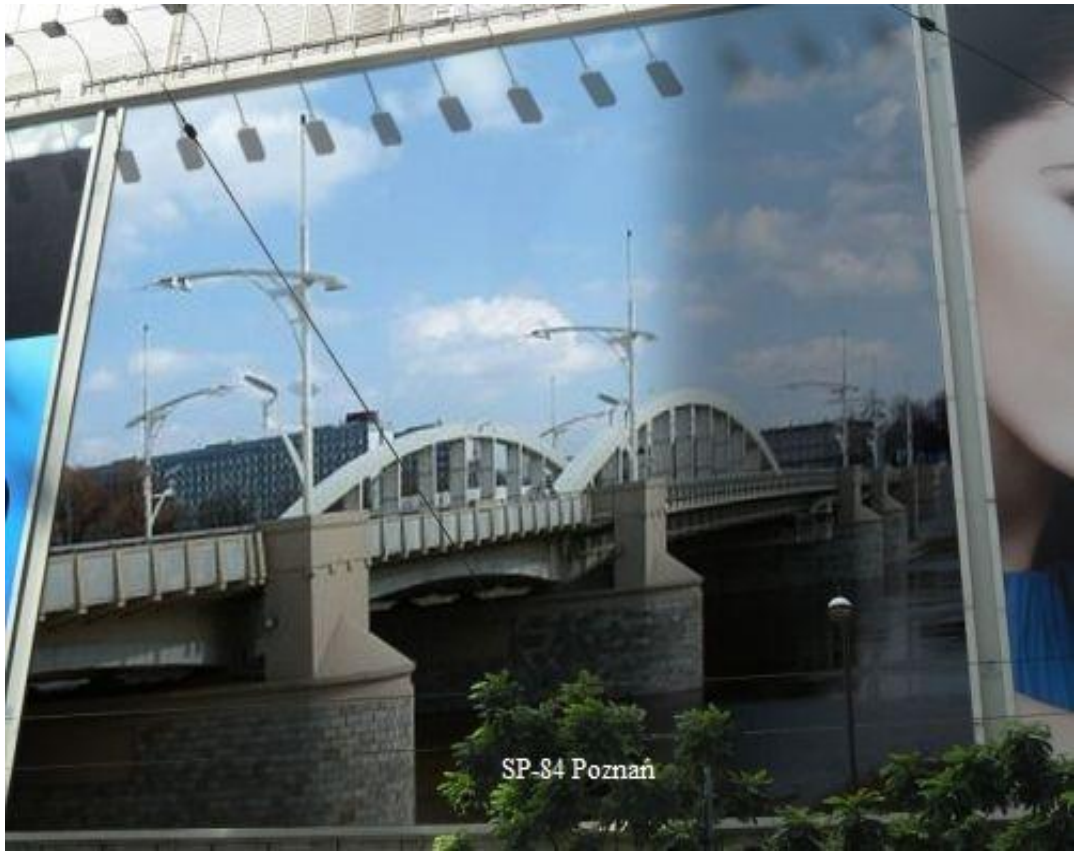
Famous European Bridges

https://www.youtube.com/watch?time_continue=58&v=6co9ufT7Y3M

***Private Primary School DDMN (Hellenic Navy Logistic
Command), Hania Greece***

**Zespół Szkół Szkoła Podstawowa im. K. Odnowiciela i
Gimnazjum w Pobiedziskach, Pobiedziska Poland**







Szkola Podstawowa nr 84
im. T. Kościuszki
w Poznaniu



Właściciel projektu: Ewelina P. Szymczak
Szkola Podstawowa nr 84
im. T. Kościuszki
ul. Św. Hieronima 1
61-837 Turzno, Poznań

Hi. Dział projektów: Ewelina P. Szymczak

Poznań

| | | | | |
|---|---|---|--|---|
|  |  |  |  |  |
|  |  |  |  |  |

















Ozel Acibadem İlkokulu, İstanbul Turkey

GALATA BRIDGE

https://www.youtube.com/watch?time_continue=51&v=s0Wm3eMHhOo

BRIDGES CONNECT İSTANBUL TURKEY

<https://www.youtube.com/watch?v=LmDqGv8T1W0>

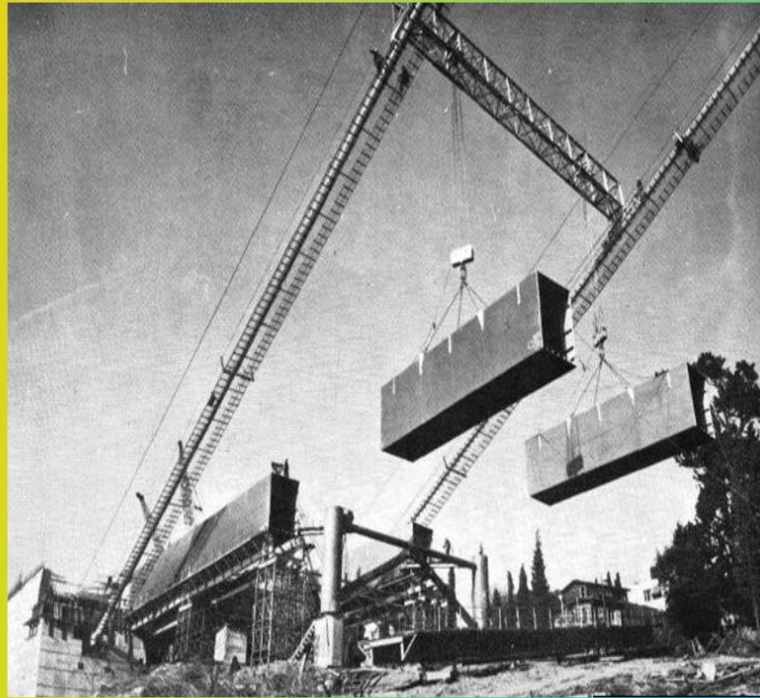
The Bridge carries 200.000 vehicles and 600.000 people a day.



The height of the bridge from sea is 64 m.



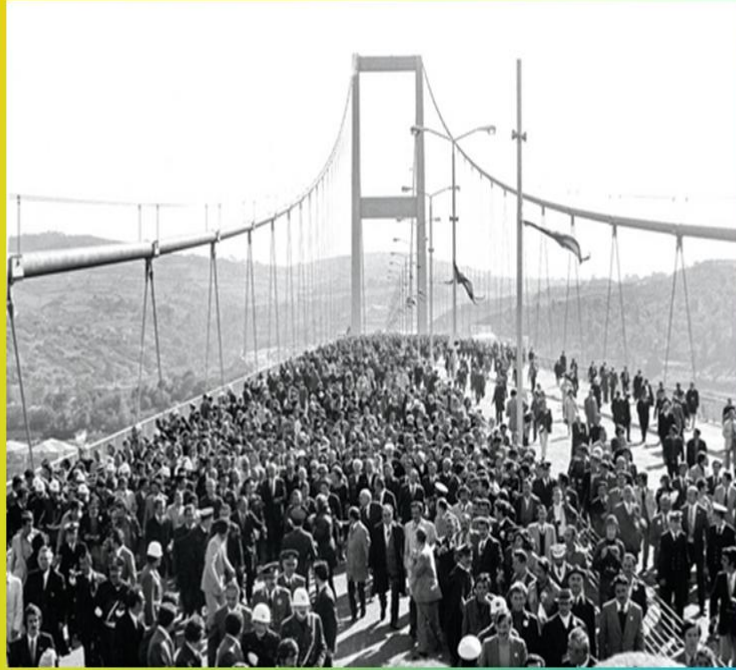
Its cost was \$25 millions.



It was built by German and England engineers. Thirty five engineers and four hundred Turkish workers were employed during the construction.



It was completed on 29 October 1973.



The bridge building started in 1970.



The project preparations were started in 1950.



BOSPHORUS BRIDGE



YAVUZ SULTAN SELİM BRIDGE

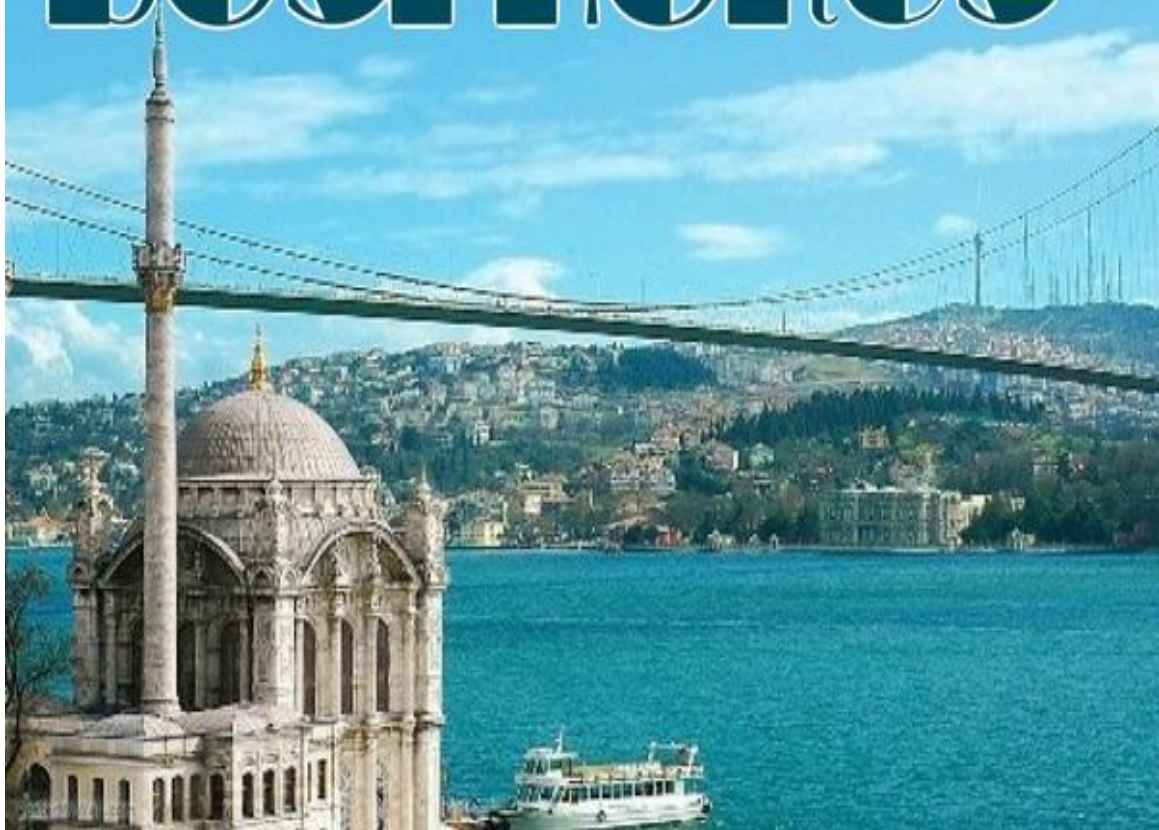
LENGTH: 1.875 METERS

HEIGHT: 320 METERS

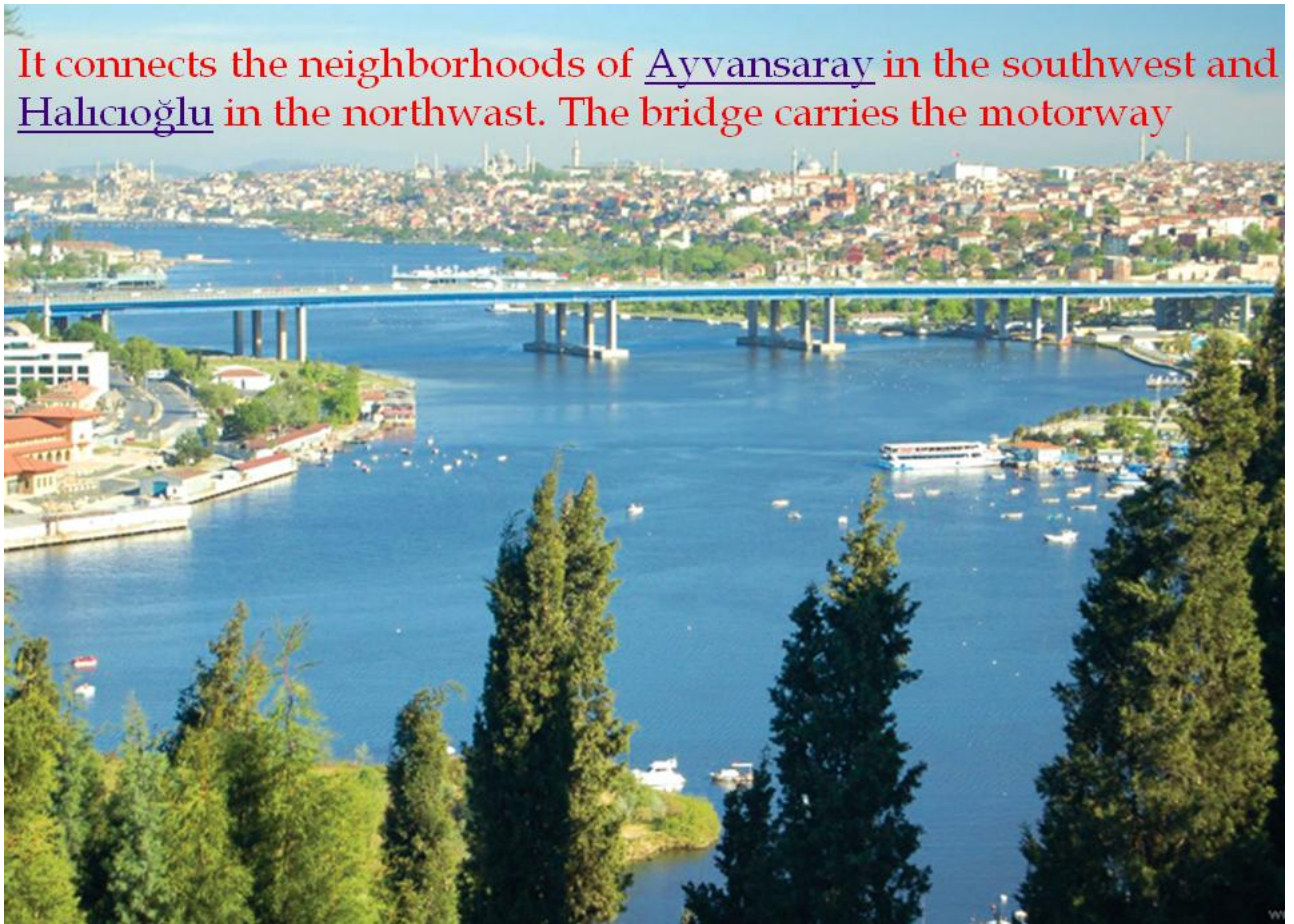
START DATE: 2013

FINISH DATE: WILL BE IN 2016

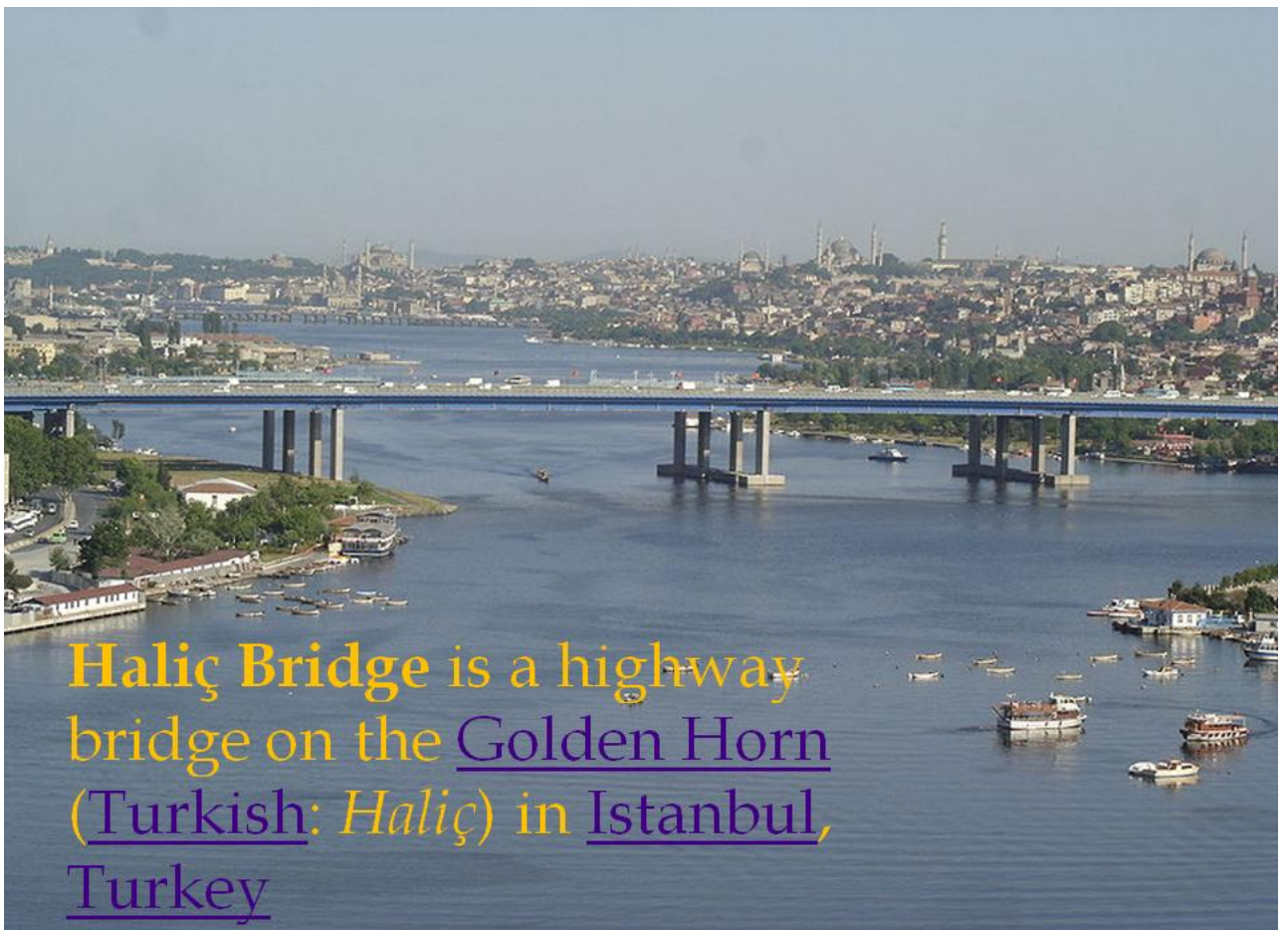
BOSPHORUS



It connects the neighborhoods of Ayvansaray in the southwest and Halıoğlu in the northwest. The bridge carries the motorway



Halıç Bridge is a highway bridge on the Golden Horn (Turkish: *Halıç*) in Istanbul, Turkey





It was constructed between 1971 and 1974, and entered service on 10 September 1974. The engineering firms which undertook the construction works were [IHI Corporation](#) of [Japan](#) and [Julius Berger-Bauboag AG](#) of [Germany](#). The bridge has a length of 995 m (3,264 ft), a width of 32 m (105 ft), and a height of 22 m (72 ft) above sea level.